

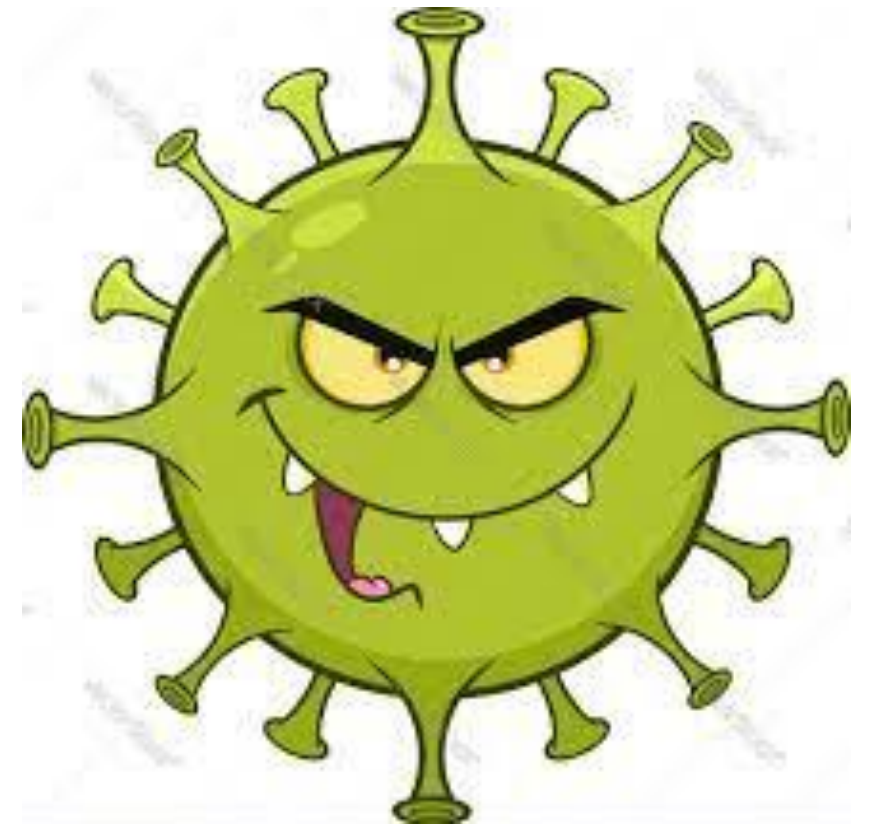
Ten Covid Commandments

Tomáš Fürst

Global pandemic of a loss of common sense

*Truth is incontrovertible. Panic may resent it.
Ignorance may deride it. Malice may distort it.
But in the end, there it is.*

Winston Churchill



1. The origin of the virus is unclear



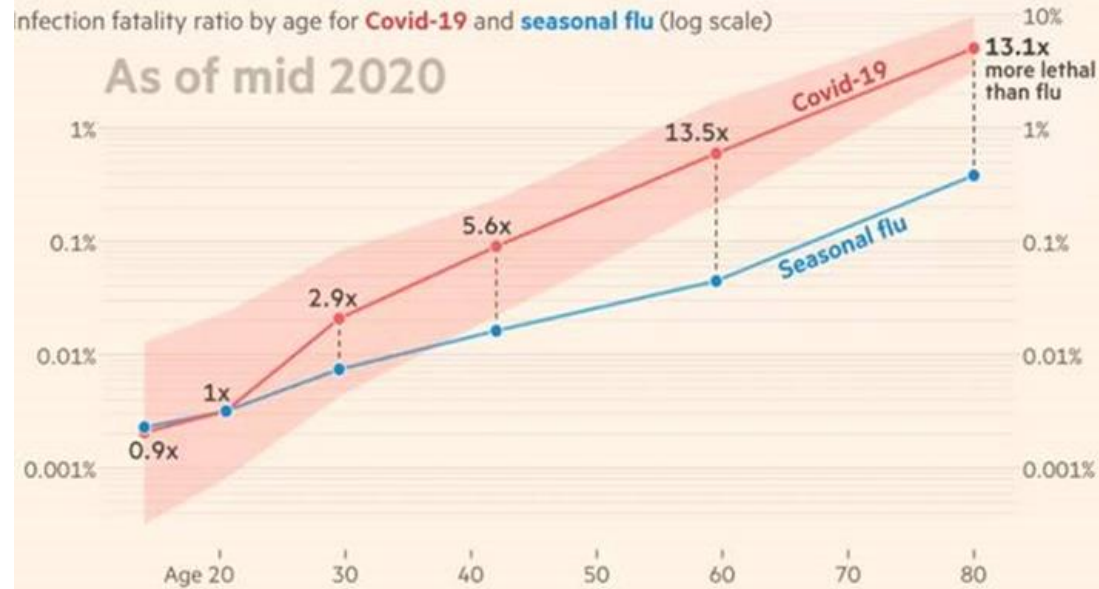
The SARS-CoV-2 virus may have passed from an animal to a man, but it also may have escaped from a lab, where it was being modified by more or less natural means.

- Vanity Fair article [article](#) (06/2021)
- Celebrated Lancet [article](#) from March 2020 in which 27 prominent virologists refuse “conspiracy theories”
- Finding of the [Congress Committee](#) from October 2022: The virus most probably comes from a laboratory by research accident.
- In January 2023, WHO [abandoned](#) the inquiry about the virus origin

2. Infection Fatality Rate of COVID-19 is comparable to seasonal flu

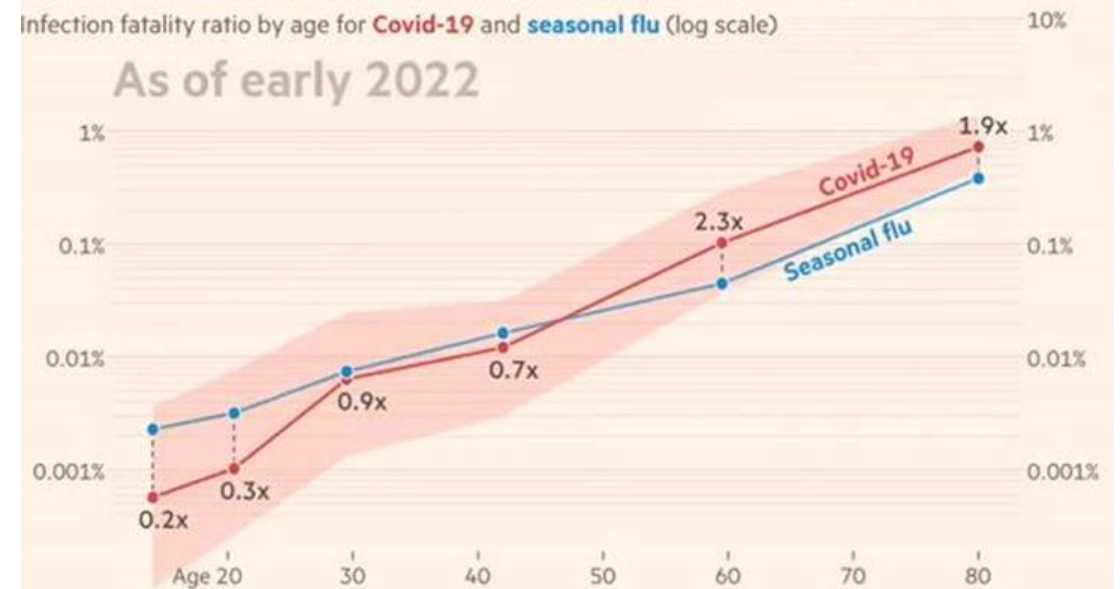
- Covid poses risk mainly for old/sick people
- [IFR](#) in western societies = approximately 0.5%
- Mean age of deceased with COVID in western societies exceeded 80 years

When we were first exposed to Covid, it was more than ten times as lethal as flu for the most vulnerable



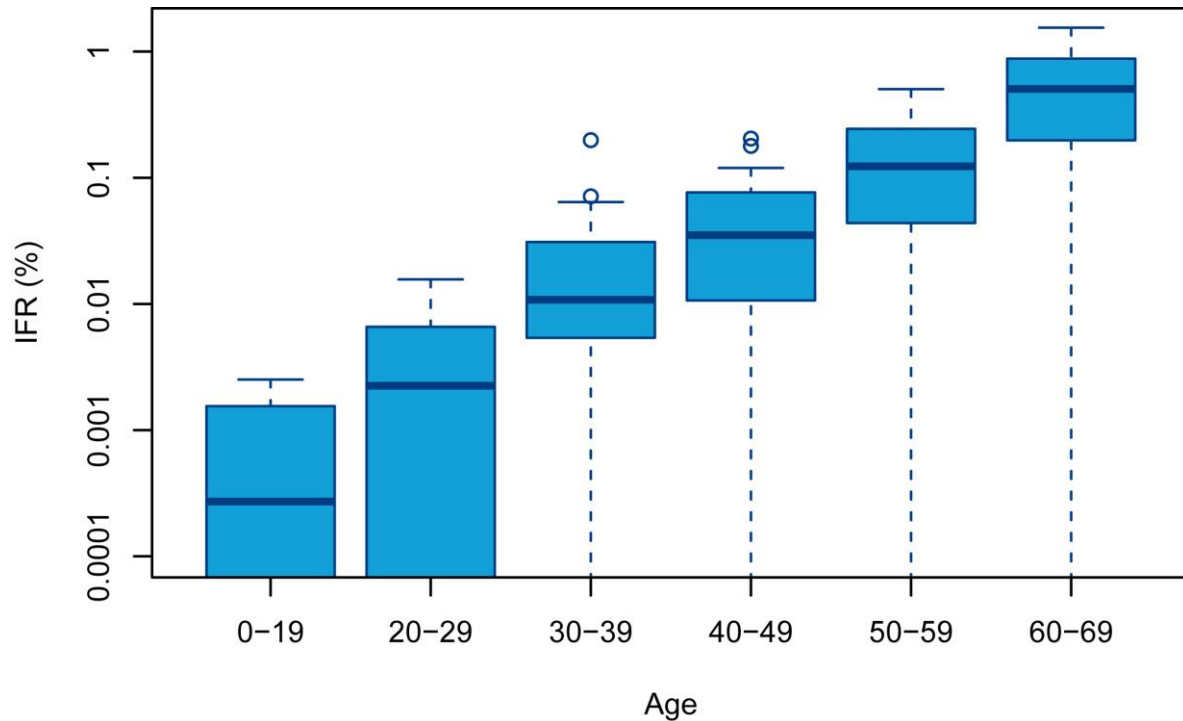
Sources: Mid 2020 Covid IFR from Marc Bevand / @zorinaq; early 2022 IFR calculated using ONS Covid deaths and ONS infection survey
FT graphic by John Burn-Murdoch / @jburnmurdoch
© FT

Immunity, improved treatments and a less virulent variant have reduced its severity, though it remains more deadly than flu for older people



Sources: Mid 2020 Covid IFR from Marc Bevand / @zorinaq; early 2022 IFR calculated using ONS Covid deaths and ONS infection survey
FT graphic by John Burn-Murdoch / @jburnmurdoch
© FT



Latest IFR estimate



Environmental Research
Volume 216, Part 3, 1 January 2023, 114655



Age-stratified infection fatality rate of COVID-19 in the non-elderly population

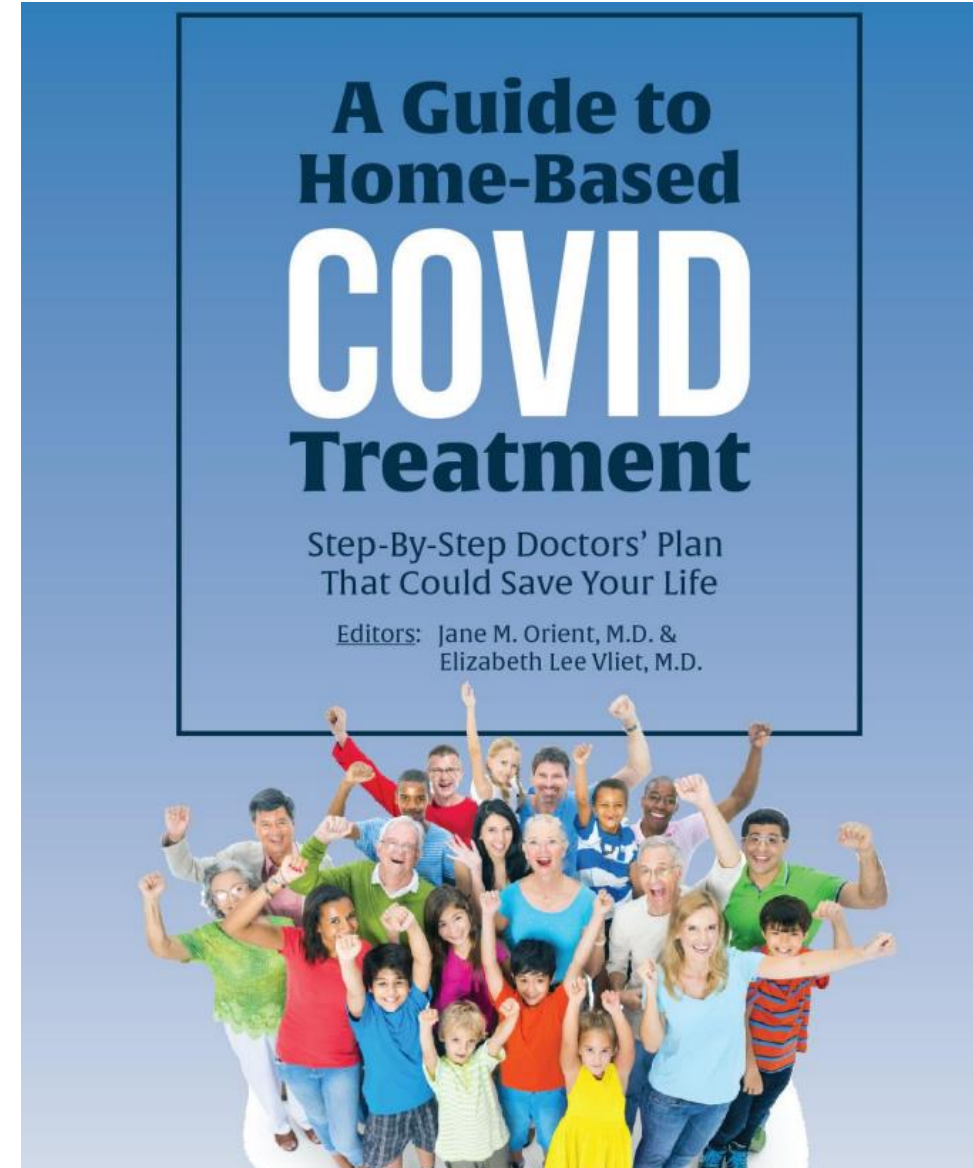
Angelo Maria Pezzullo ^{a b}, Cathrine Axfors ^a, Despina G. Contopoulos-Ioannidis ^{a c},
Alexandre Apostolatos ^{a d}, John P.A. Ioannidis ^{a e}  

3. COVID does not represent significant risk for kids

- Worldwide number of PCR+ patients under 10 years reaches approx. **8 thousand**
- **Millions** of kids die of malnutrition each year
- In Czech Republic, **11 kids under 15 years** died with COVID in the past 3 years
- Each year, about **450 kids of this age** die

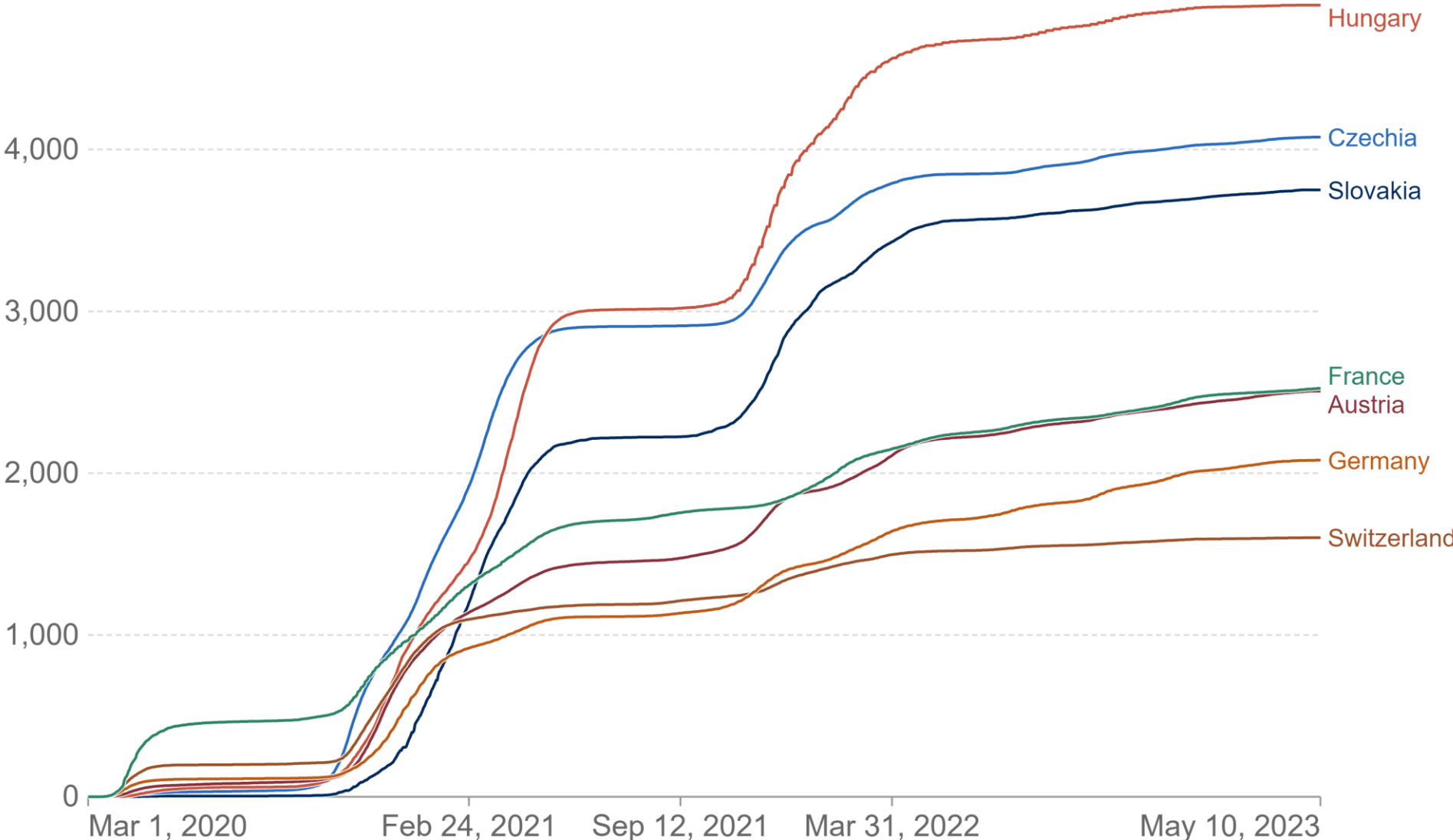
4. Covid is preventable and treatable

- „Do not come to see me, go to bed, take tylenol and if you can't breathe, call 911”
- Vitamin D + zinc (Radan Gocal)
- Hydration and calming down
- Oxymetry and regular monitoring
- Corticosteroids
- Montelukast (Vojta Thon)
- Monoclonal antibodies, convalescent plasma
- Anticoagulation! (Jiří Beran)
- [Ivermectin](#), Isoprinosine, [Hydroxychloroquine](#), ...



Cumulative confirmed COVID-19 deaths per million people

Due to varying protocols and challenges in the attribution of the cause of death, the number of confirmed deaths may not accurately represent the true number of deaths caused by COVID-19.



5. School closures are counter productive

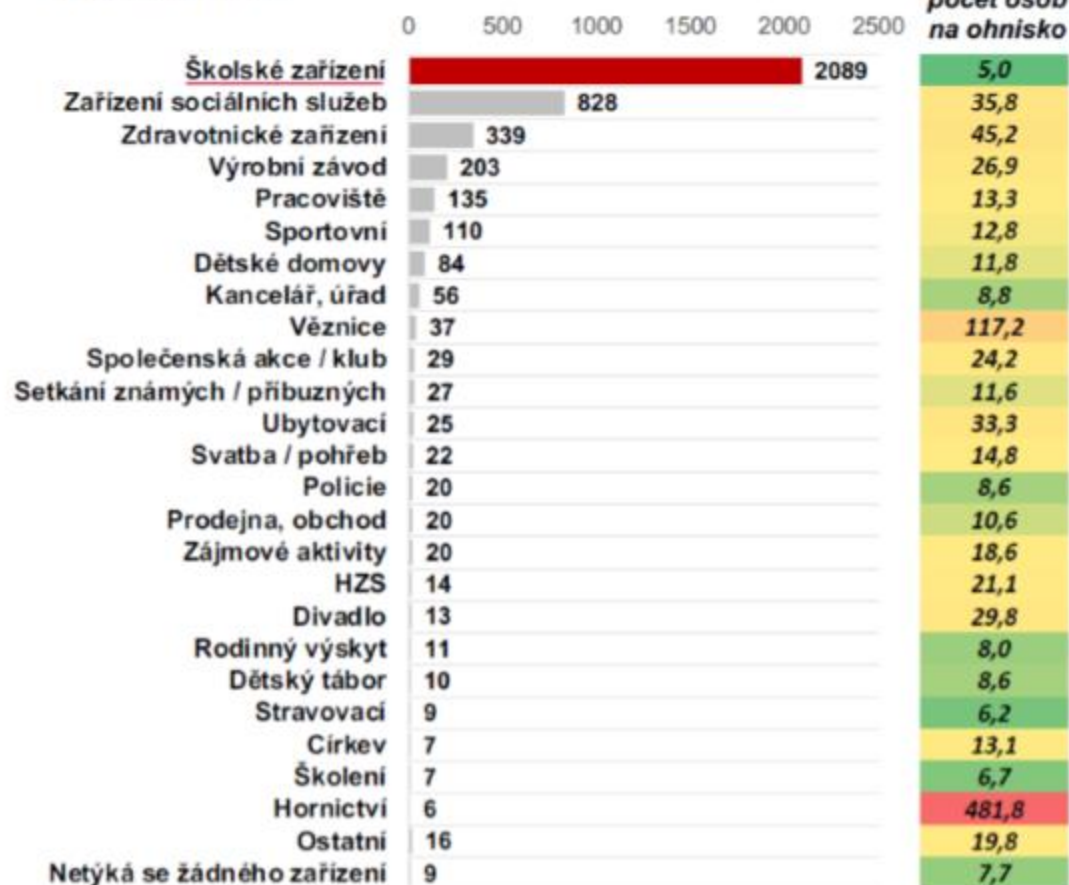
- [Japanese study](#): Nature Medicine – no evidence that school closures reduce the spread ...
- Very robust Swedish [study](#) in PNAS
- Disinformation by Czech UZIS that we [refuted](#) (next slide)
- Czech schools were closed for [longest time in Europe](#)
- UNESCO [cites](#) a long list of school closure adverse effects
- Scott Adams [reports](#) that a quarter of US high school students considered suicide, drug abuse doubled, self-harm tripled. Half of young people report being nervous from any social interaction.
- University of Chicago [estimates](#) losses in the order of tenths of GDP
- OECD [report](#) estimates economic losses in the USA in tens of trillions dollars (10^{12})
- Complete lack of EBM evidence, no RCTs!

Celkový přehled za období 05/2020 – 03/2021 k 28. 3.

Počet pozitivních osob

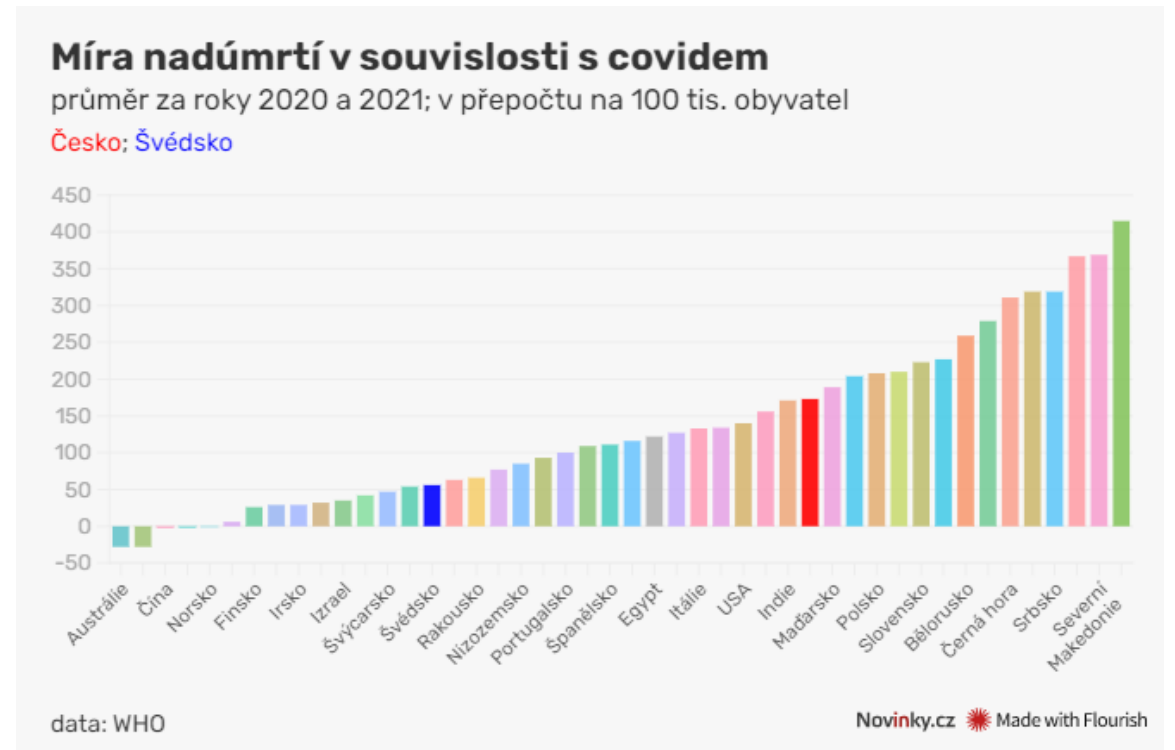


Počet ohnisek



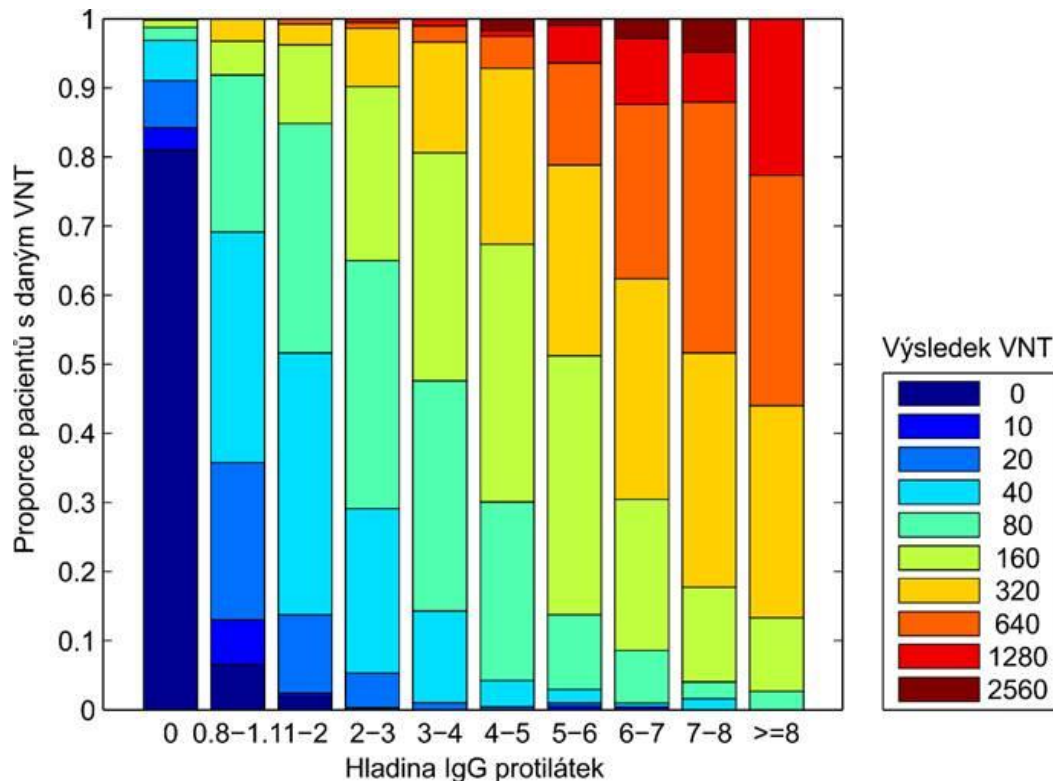
6. Lockdowns and masks do little to stop the spread

- [Danish experiment](#): The mink farm disaster, 7 versus 4 districts comparison
- [Interactive infographic of WHO](#) (May 2022)
- The Chinese experience
- The Australian experience
- The Swedish experience
- Masks do not work: [The Cochrane study](#)

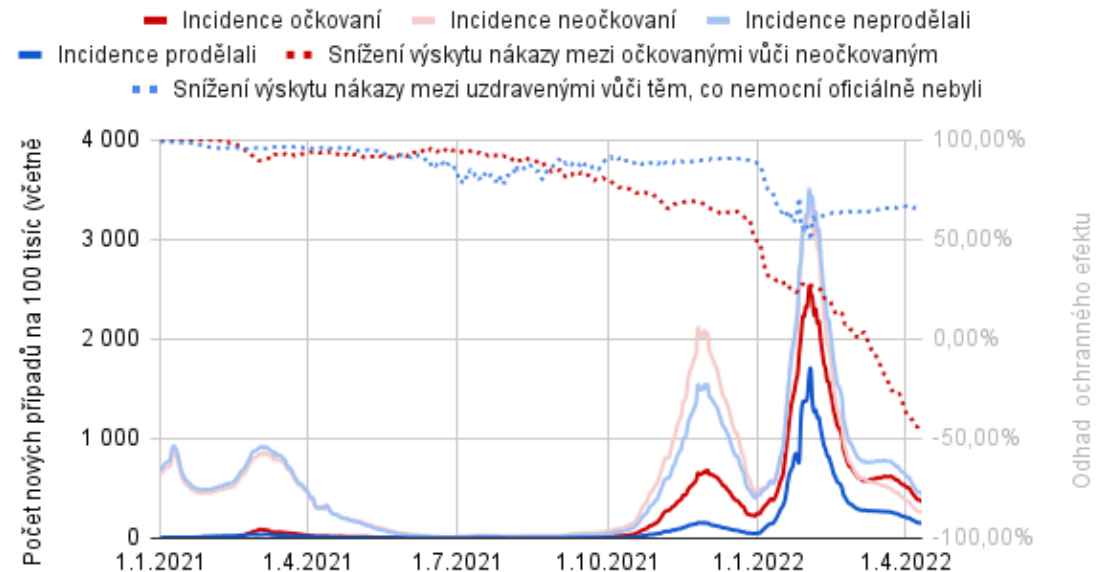


7. Natural immunity works very well

- Post-infection immunity provides high and long-term protection against re-infection, severe course and death: [The Lancet meta-study](#)
- Our own studies from 2020
- Unexplainable denial of natural immunity by the authorities
- Vaccination of the convalescent makes no sense (and never did)

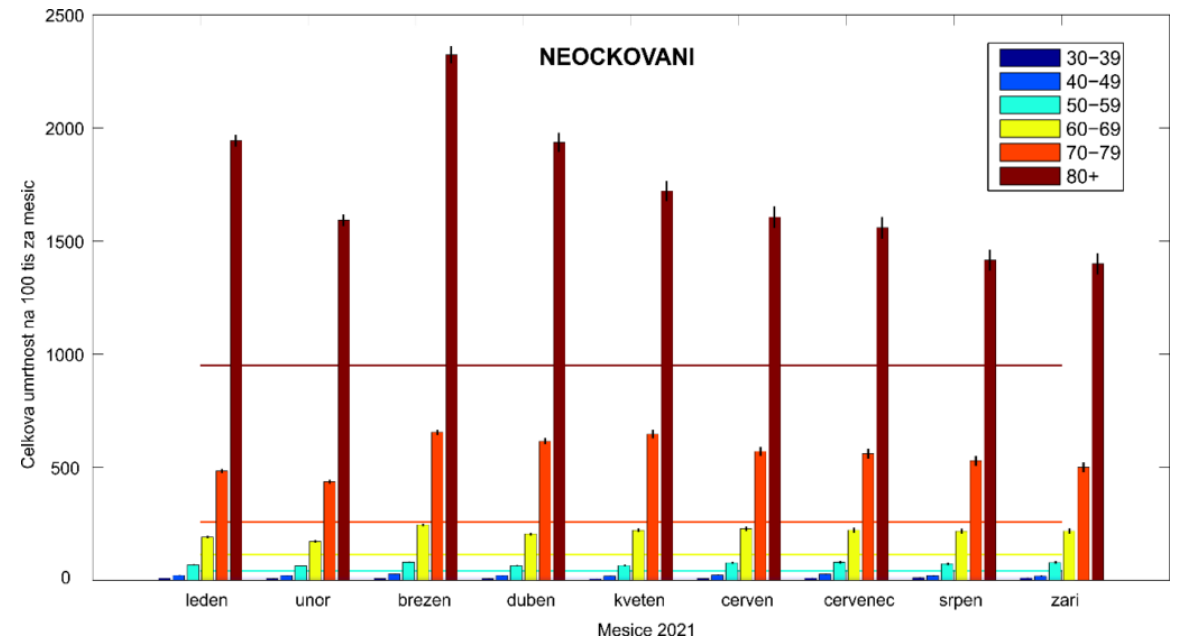
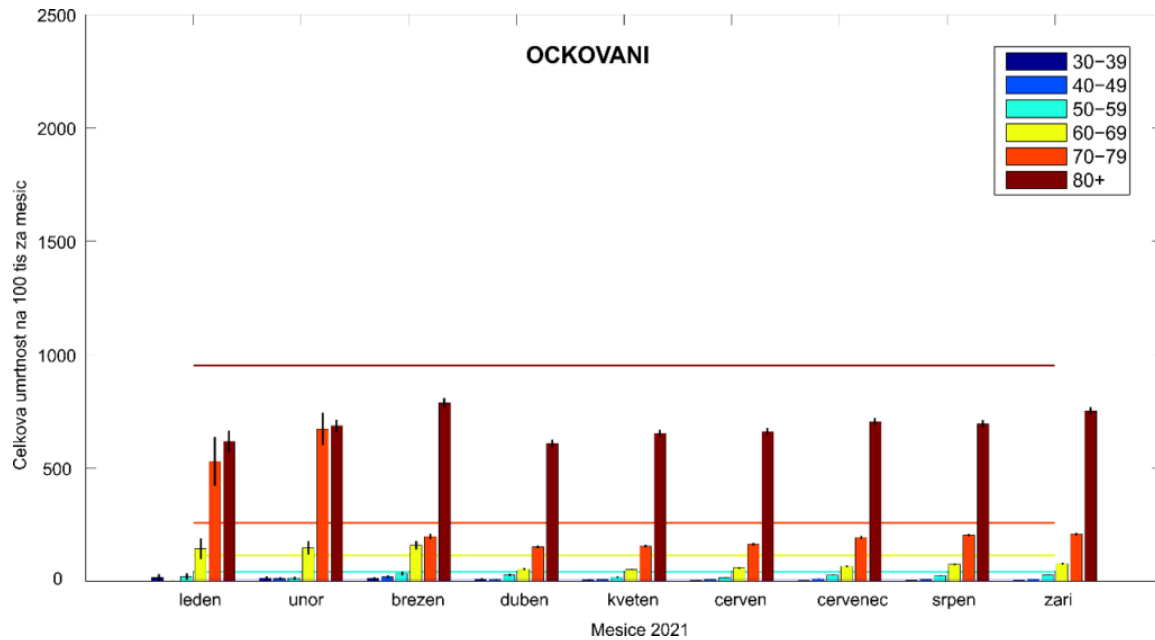


Počet nových případů na 100tis - očkovaní vs neočkovaní

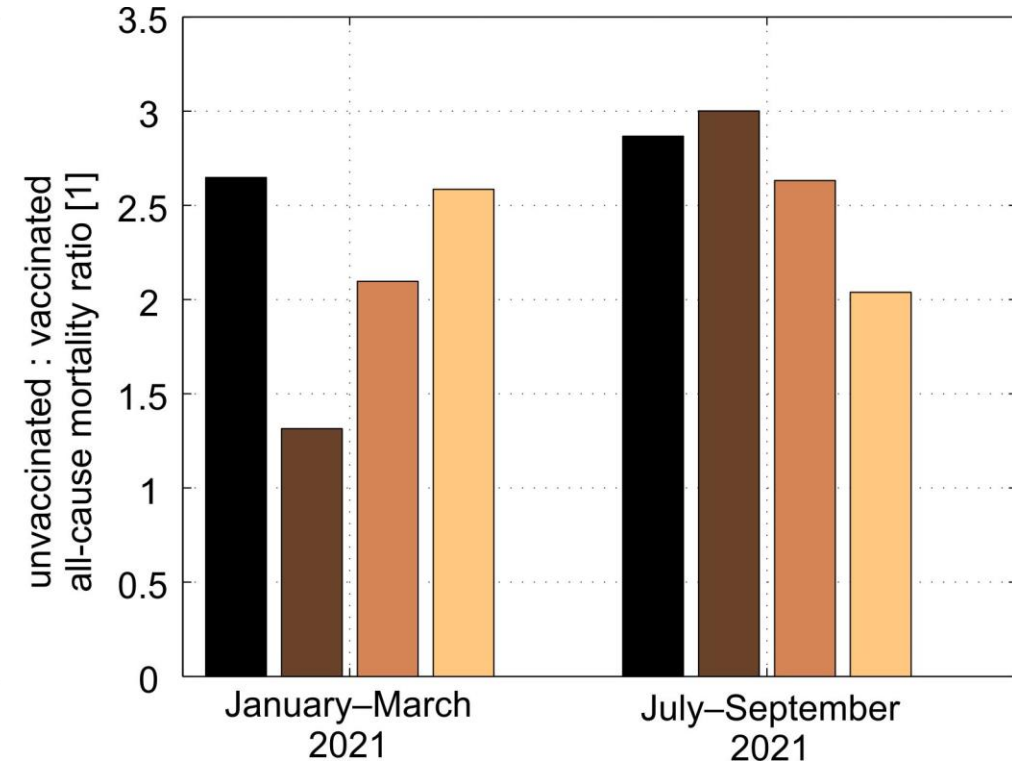
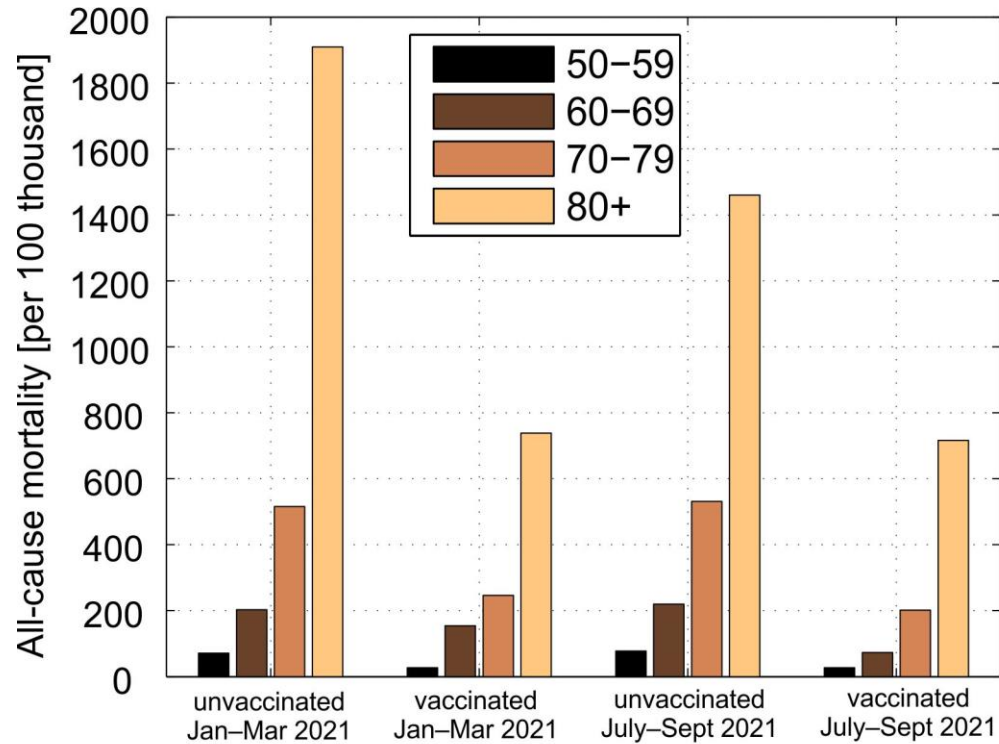


8. Population wide vaccination by mRNA technology was not rational

- EBM: risk—benefit analysis
- Vaccinating children was never rational (ethical, and legal?)
- The tragedy of registration RCTs
- Vaccinating the reconvalescent never made any sense
- What is the vaccine effectiveness?

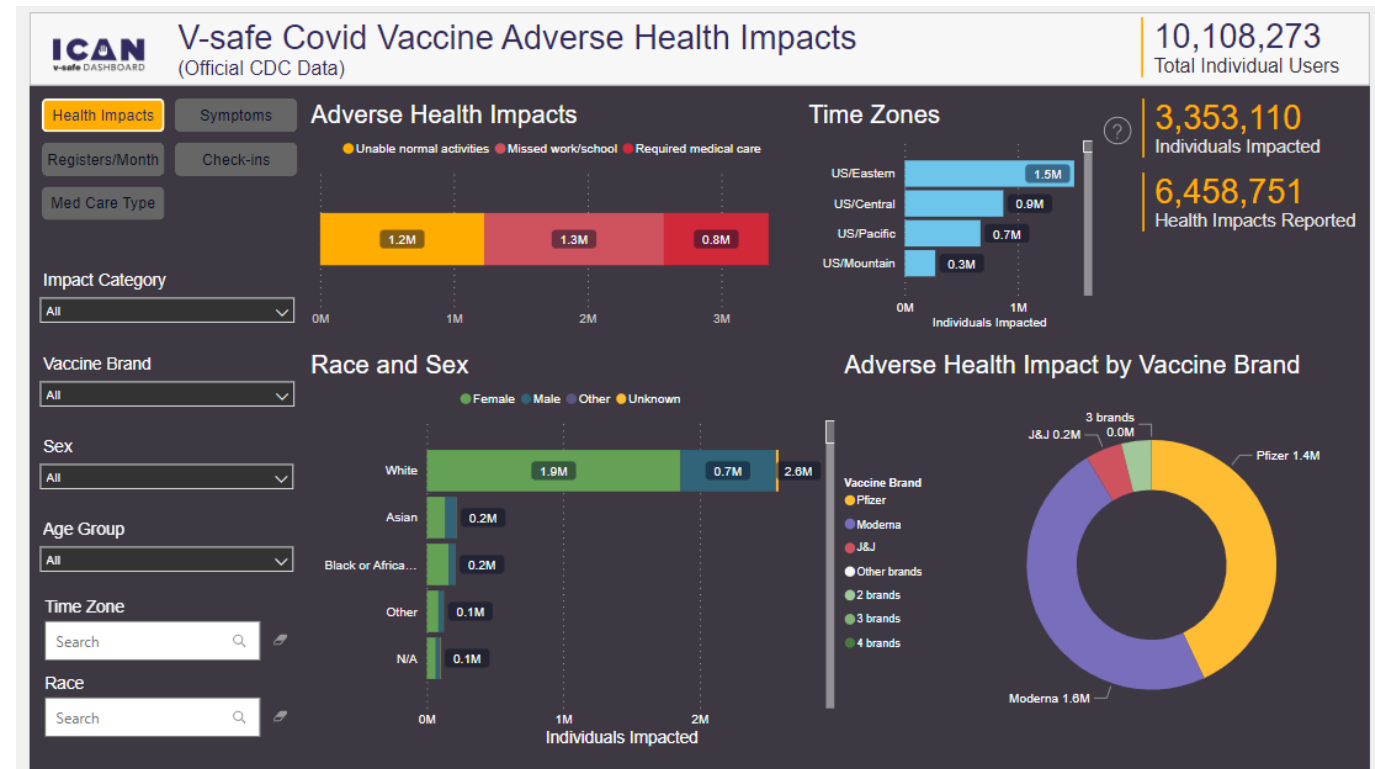


Vaccine effectiveness in observational data?

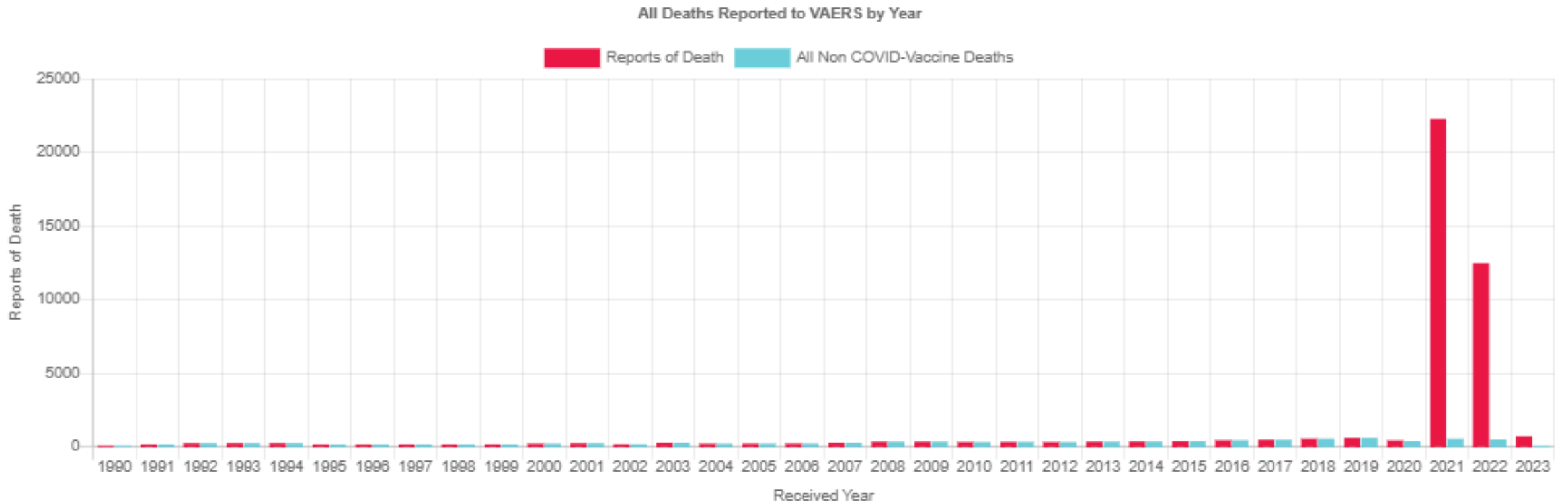


9. The mRNA technology is not safe

- The curse of Czech terminology AE
- The problems of registration RTCs [SMIS](#), [BMJ](#), [SMIS](#), [ECHO](#)
- VAERS and SUKL
- Under-reporting factor? 42!
- Biodistribution, geno-toxicity, DNA damage repair mechanism interference, spike protein toxicity, ...



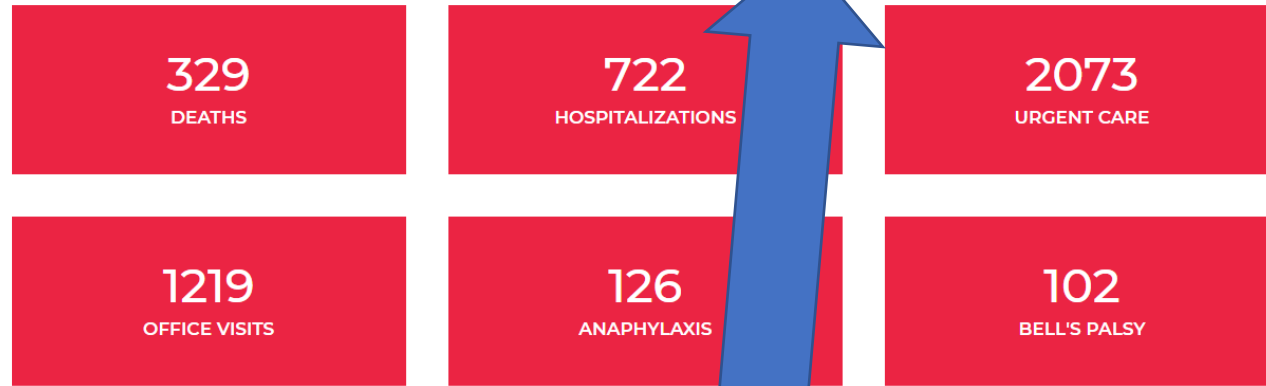
The mRNA technology is not safe



VAERS COVID REPORTS

9,844 Reports Through January 22, 2021*

jump to browse reports ▾



Data through
January 22, 2021

Way Back Machine
February 5, 2021

What is causing excess mortality?

[Our World in Data](#)

[EuroMoMo](#)

Mortality by vaccination status??

The case of missing babies!

this is when ONS stopped reporting all cause deaths by vaccine status

% Excess Deaths (Non-COVID-19) by Age Group, Sex & Month (that week ended in) England
 Weeks Ending 27Mar20 - 30Dec22
 Source Data:- Office for Health Improvement and Disparities

Year	Mont	0-24		25-49		50-64		65-74		75-84		85+	
		Females	Males	Females	Males	Females	Males	Females	Males	Females	Males	Females	Males
2020	3	-7.7%	-24.2%	-4.2%	2.5%	0.2%	-3.6%	-8.4%	-1.9%	-5.6%	-0.6%	-6.4%	-1.9%
2020	4	-5.2%	-20.8%	7.4%	0.4%	12.4%	16.1%	13.5%	18.2%	25.3%	25.9%	40.5%	36.1%
2020	5	-14.0%	-12.6%	-1.6%	-2.4%	3.8%	5.0%	-1.8%	-4.1%	-0.5%	-1.7%	10.9%	0.2%
2020	6	-22.4%	-21.0%	-7.9%	-7.4%	-5.8%	-2.4%	-3.3%	-8.0%	-8.6%	-10.6%	-11.3%	-13.2%
2020	7	-16.1%	-9.0%	0.9%	0.2%	-6.5%	2.6%	-3.1%	-4.8%	-7.0%	-7.4%	-9.2%	-13.9%
2020	8	-1.4%	-1.7%	2.5%	5.9%	2.4%	4.1%	-5.2%	-2.5%	-0.7%	-1.2%	-2.7%	-5.4%
2020	9	-0.7%	-15.8%	6.6%	6.2%	1.6%	5.8%	0.1%	2.4%	0.4%	-0.1%	-2.2%	-1.9%
2020	10	-22.4%	-12.0%	2.7%	7.6%	4.1%	3.9%	1.0%	-3.0%	-2.5%	-4.2%	-3.8%	-4.5%
2020	11	-10.1%	-6.5%	3.9%	5.1%	1.8%	6.1%	-7.3%	-2.9%	-8.1%	-7.0%	-7.2%	-10.7%
2020	12	-3.3%	-8.6%	5.5%	6.3%	-6.0%	3.1%	-10.3%	-11.0%	-14.9%	-16.1%	-14.9%	-17.7%
2021	1	-2.6%	-8.4%	0.4%	-11.0%	-10.4%	-6.3%	-17.0%	-16.4%	-19.9%	-23.0%	-22.8%	-26.7%
2021	2	-0.7%	4.6%	2.5%	-1.2%	-8.2%	-3.8%	-12.5%	-15.1%	-18.2%	-17.4%	-19.3%	-24.9%
2021	3	17.8%	-2.0%	-4.3%	5.3%	-7.7%	-3.4%	-13.3%	-14.2%	-18.1%	-20.7%	-22.3%	-25.2%
2021	4	-11.6%	-13.5%	2.7%	-4.9%	-5.8%	0.5%	-9.0%	-11.4%	-13.4%	-14.3%	-16.3%	-19.3%
2021	5	-7.8%	8.4%	2.6%	1.3%	-5.6%	3.2%	-10.1%	-7.4%	-8.8%	-7.4%	-10.0%	-10.4%
2021	6	10.1%	3.0%	-2.1%	4.9%	-0.8%	6.6%	-4.6%	-5.1%	-5.1%	-3.3%	-5.6%	-7.2%
2021	7	-8.4%	0.7%	2.4%	3.4%	7.1%	7.2%	0.1%	2.1%	0.6%	1.7%	-0.2%	-2.0%
2021	8	-8.9%	-4.4%	0.0%	3.3%	6.0%	6.7%	5.4%	1.3%	2.6%	-0.1%	3.9%	1.2%
2021	9	-5.6%	-6.7%	6.8%	5.9%	8.4%	4.8%	7.9%	6.6%	6.0%	4.4%	4.1%	1.1%
2021	10	2.6%	5.9%	1.2%	12.0%	9.8%	10.2%	3.6%	3.3%	0.1%	0.9%	1.2%	-0.1%
2021	11	12.9%	9.8%	1.2%	3.4%	2.3%	9.2%	6.4%	6.4%	4.5%	0.7%	5.7%	0.1%
2021	12	3.3%	5.3%	-4.2%	2.9%	6.8%	6.9%	2.0%	1.9%	0.7%	-3.8%	0.4%	-3.7%
2022	1	-9.8%	-10.2%	-2.6%	9.8%	-8.4%	-4.2%	-14.2%	-12.3%	-14.7%	-17.4%	-20.8%	-23.4%
2022	2	4.0%	14.8%	-2.9%	-4.4%	-3.7%	3.6%	-8.1%	-5.1%	-11.5%	-13.8%	-16.0%	-18.6%
2022	3	11.0%	8.3%	-6.2%	4.6%	-8.3%	3.4%	-7.4%	-6.2%	-9.2%	-12.0%	-14.7%	-15.2%
2022	4	-27.4%	-1.4%	-5.9%	-5.1%	-2.0%	-3.9%	-9.0%	-7.3%	-8.9%	-10.8%	-9.5%	-12.1%
2022	5	-9.3%	6.4%	5.4%	-4.8%	2.6%	8.9%	0.0%	1.7%	1.6%	2.3%	3.2%	1.4%
2022	6	14.5%	13.8%	14.6%	7.2%	17.4%	15.8%	8.1%	8.4%	9.5%	6.6%	8.0%	8.4%
2022	7	8.0%	5.5%	6.6%	8.6%	4.6%	11.0%	4.7%	5.5%	7.1%	2.8%	8.2%	6.9%
2022	8	9.7%	9.7%	-4.0%	10.8%	17.1%	12.5%	0.3%	7.2%	4.5%	5.6%	10.8%	4.1%
2022	9	-1.2%	11.2%	10.0%	8.2%	13.8%	16.9%	7.9%	5.2%	5.7%	6.6%	7.6%	7.5%
2022	10	3.9%	5.0%	16.9%	9.2%	11.9%	10.0%	7.4%	6.3%	6.4%	6.4%	9.1%	7.3%
2022	11	12.4%	6.2%	8.1%	12.4%	10.7%	13.3%	9.9%	6.9%	2.5%	1.9%	6.7%	1.9%
2022	12	24.9%	5.4%	6.6%	4.4%	13.7%	12.6%	6.5%	3.9%	9.7%	-0.3%	7.7%	3.7%



i wonder why...



10. Censorship of dissenting opinions was counter-productive

- What is the difference between fake-news and news?
- Robert Malone, Peter McCullough, Joe Rogan, Steve Kirsch, Joseph Mercola, ...
- Jiří Beran, Soňa Peková, Hanka Zelená, Zuzka Krátká, Vláďa Čížek, Jarek Janošek, ...
- Angelika Bazalová, Markéta Dobiášová, Martina Kociánová, Petr Bohuš, Viktor Bareš, Robin Čumpelík, ...
- Institute for Science and Freedom idea

